

RECEIVED

APPROVED
 Montana Department of
 Environmental Quality
 Reviewer *AM* Date 12/27/2017

DEC 15 2017

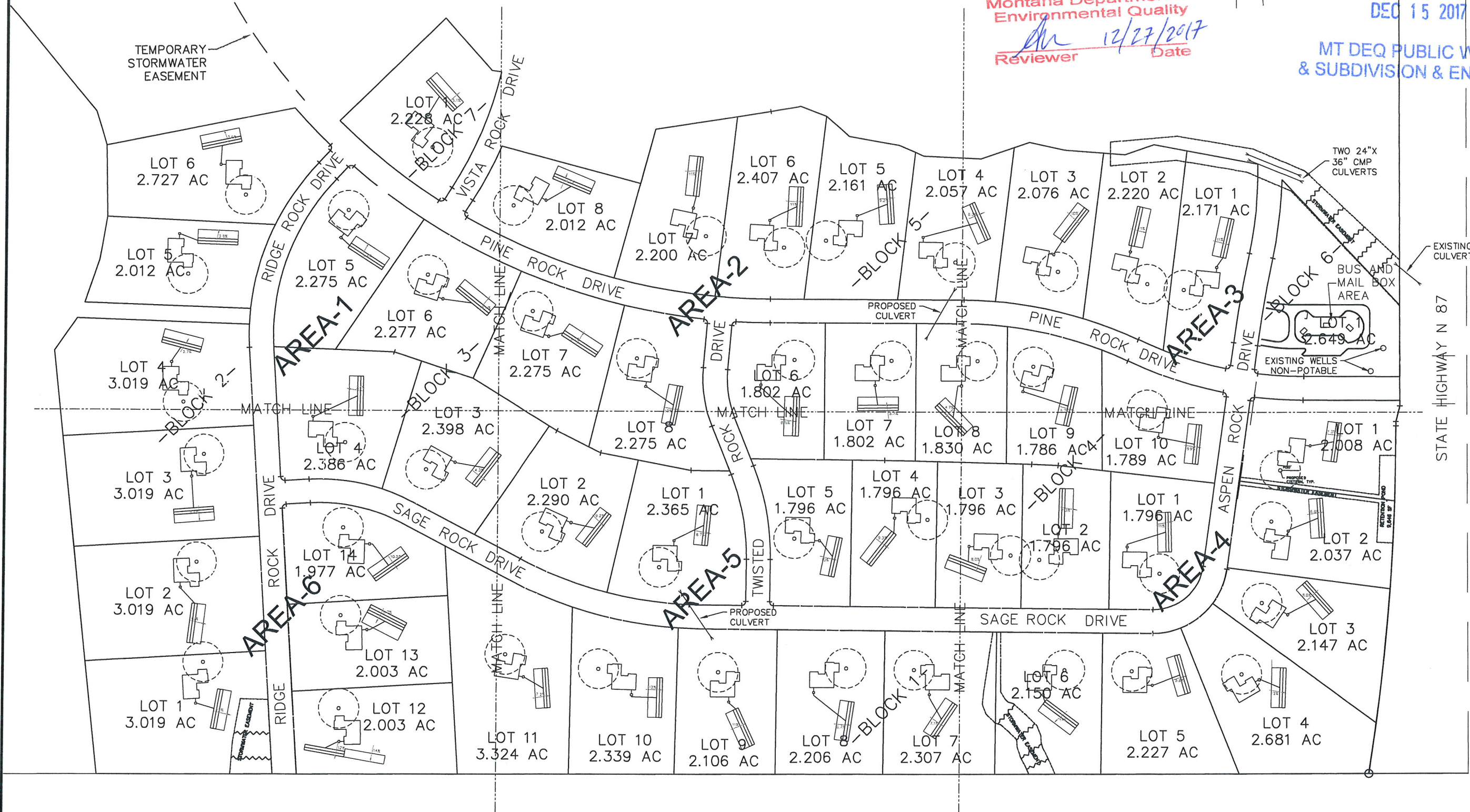
MT DEQ PUBLIC WATER
 & SUBDIVISION & ENGINEER

2110 OVERLAND AVE.
 SUITE 119B
 BILLINGS, MT 59102
 PHONE (406) 294-2294
 FAX (406) 294-2295

blueline
 ENGINEERING

REVISIONS	
NO.	DATE
1.	8/8/17
2.	9/21/17
3.	12/8/17
4.	12/11/17

JOB: 15051
 DATE: 6/8/17
 DRAWN BY: NSM
 CHECKED BY: MDP
 SCALE: 1"=250'
 DRAWING: SITE 27



NOTE:
 - THERE ARE NO WELLS OR DRAINFIELDS WITHIN
 100' FOOT OF THE BOUNDARY OF THE
 PROPOSED SUBDIVISION IN COMPLIANCE WITH
 ARM 17.36.103(1)(e)

PINE ROCK SUBDIVISION, 1ST FILING
 S.27 T02N R26E
 YELLOWSTONE COUNTY
 AREA LAYOUT

~SHEET~
 4 / 12

RECEIVED

DEC 15 2017

MT DEQ PUBLIC WATER
 & SUBDIVISION & ENGINEER

APPROVED
 Montana Department of
 Environmental Quality
[Signature] 12/27/2017
 Reviewer Date

2110 OVERLAND AVE.
 SUITE 119B
 BILLINGS, MT 59102
 PHONE (406) 294-2294
 FAX (406) 294-2295

blueline
 ENGINEERING

REVISIONS

1.	12/8/17
2.	12/11/17

JOB: 15051

DATE: 6/8/17

DRAWN BY: NSM

CHECKED BY: MDP

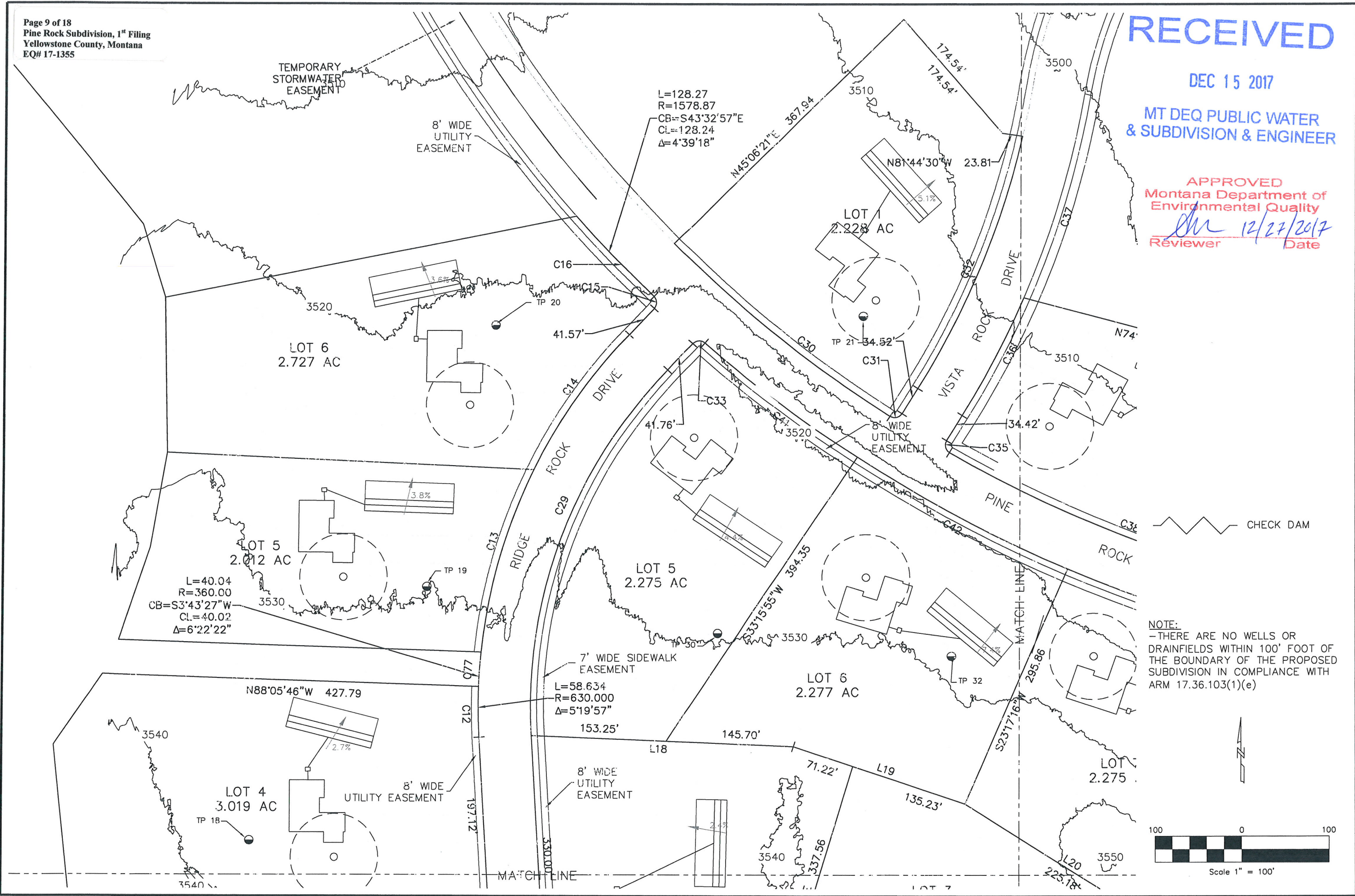
SCALE: 1"=100'

DRAWING: SITE 27

PINE ROCK SUBDIVISION, 1ST FILING
 S.27 T02N R26E
 YELLOWSTONE COUNTY
 LOT LAYOUT - AREA 1

~SHEET~

5
 12



CHECK DAM

NOTE:
 - THERE ARE NO WELLS OR
 DRAINFIELDS WITHIN 100' FOOT OF
 THE BOUNDARY OF THE PROPOSED
 SUBDIVISION IN COMPLIANCE WITH
 ARM 17.36.103(1)(e)

